

Minnabis

4225 38th St SW
Fargo, ND 58104
cody@northlandvapor.com
(763) 229-2634

Sample: 2212AIT0549.1727

Strain: MN- STRAWBERRY LEMONADE

Batch#: ; Batch Size: g

Sample Received: 01/05/2023; Report Created: 01/11/2023

rcre22cr

Ingestible, Soft Chew, Other



0.089%
Total THC

<LOQ
Total CBD

0.102%
Total Cannabinoids

Cannabinoids

Date Tested: 01/06/2023

Analytes	%	mg/g	mg/ml	mg/serving	LOQ
CBC	<LOQ	<LOQ	<LOQ	<LOQ	0.001
CBD	<LOQ	<LOQ	<LOQ	<LOQ	0.001
CBDa	<LOQ	<LOQ	<LOQ	<LOQ	0.001
CBDV	<LOQ	<LOQ	<LOQ	<LOQ	0.001
CBG	<LOQ	<LOQ	<LOQ	<LOQ	0.001
CBGa	<LOQ	<LOQ	<LOQ	<LOQ	0.001
CBL	<LOQ	<LOQ	<LOQ	<LOQ	0.001
CBN	<LOQ	<LOQ	<LOQ	<LOQ	0.001
Δ8-THC	0.013	0.133	NaN	NaN	0.001
Δ9-THC	0.089	0.892	NaN	NaN	0.001
THCa	<LOQ	<LOQ	<LOQ	<LOQ	0.001
THCVa	<LOQ	<LOQ	<LOQ	<LOQ	0.001

Method: HPLC
Total THC = THCa * 0.877 + Δ9-THC
Total CBD = CBDa * 0.877 + CBD

Total Cannabinoids represents the sum of all cannabinoids in the table above.
Results are reported on a dry weight basis: Cannabinoid % / (1.0 - moisture content % / 100) = Dry weight cannabinoids %
LOQ = Limit of Quantitation

Summary

Not Tested Residual Solvents	Not Tested NT Terpenes	Pass Pesticides
Pass Mycotoxins	Pass Heavy Metals	Not Tested Moisture

4150 98th Ave S
Fargo, ND
(888) 897-4367
www.hempinspection.com




Ben Gaboury

Senior Analytical Chemist



Confident Cannabis
All Rights Reserved
(866) 506-5866

This product has been tested by Adams Independent Testing using valid testing methodologies. Values reported apply only to the product tested and only as the sample was received. Adams Independent Testing makes no claims as to the efficacy, safety, or other risks associated with any detected or nondetected level of any compounds reported herein. This Certificate shall not be reproduced except in full, without the written approval of Adams Independent Testing. Test results that are Pass/Fail are reported using the Oregon Health Authority, Public Health Division - Chapter 333-007-0320, effective 1/1/2021. Results above the Limit will be considered Fail and will be in red. This is for informational purposes only and can be changed upon request. Measurement Uncertainty is not used for pass/fail conditions but available upon request.

Minnabis

4225 38th St SW
 Fargo, ND 58104
 cody@northlandvapor.com
 (763) 229-2634

Sample: 2212AIT0549.1727

Strain: MN- STRAWBERRY LEMONADE

Batch#: ; Batch Size: g

Sample Received: 01/05/2023; Report Created: 01/11/2023

rcre22cr

Ingestible, Soft Chew, Other



Microbials

Pass

Date Tested: 01/11/2023

Analyte	Limit	Units	Status
Aerobic Bacteria	10000	CFU/g	NT
Bile-Tolerant Gram-Negative Bacteria	100	NR	NT
Coliforms	100	NR	NT
E. Coli	1	<LOQ	Pass
Salmonella	1	<LOQ	Pass
Yeast & Mold	1000	<LOQ	Pass

Method: qPCR



Ben Gaboury

Senior Analytical Chemist

Minnabis

4225 38th St SW
Fargo, ND 58104
cody@northlandvapor.com
(763) 229-2634

Sample: 2212AIT0549.1727

Strain: MN- STRAWBERRY LEMONADE

Batch#: ; Batch Size: g

Sample Received: 01/05/2023; Report Created: 01/11/2023

rcre22cr

Ingestible, Soft Chew, Other



Mycotoxins

Pass

Date Tested: 01/10/2023

Analyte	LOQ	Limit	Units	Status
	PPB	PPB	PPB	
Aflatoxin B1	1.00	20.00	<LOQ	Pass
Aflatoxin B2	1.00	20.00	<LOQ	Pass
Aflatoxin G1	1.00	20.00	<LOQ	Pass
Aflatoxin G2	1.00	20.00	<LOQ	Pass
Ochratoxin A	1.00	20.00	<LOQ	Pass

Method: LCMS

4150 98th Ave S
Fargo, ND
(888) 897-4367
www.hempinspection.com




Ben Gaboury

Senior Analytical Chemist



Confident Cannabis
All Rights Reserved
(866) 506-5866

This product has been tested by Adams Independent Testing using valid testing methodologies. Values reported apply only to the product tested and only as the sample was received. Adams Independent Testing makes no claims as to the efficacy, safety, or other risks associated with any detected or nondetected level of any compounds reported herein. This Certificate shall not be reproduced except in full, without the written approval of Adams Independent Testing. Test results that are Pass/Fail are reported using the Oregon Health Authority, Public Health Division - Chapter 333-007-0320, effective 1/1/2021. Results above the Limit will be considered Fail and will be in red. This is for informational purposes only and can be changed upon request. Measurement Uncertainty is not used for pass/fail conditions but available upon request.

Minnabis

4225 38th St SW
Fargo, ND 58104
cody@northlandvapor.com
(763) 229-2634

Sample: 2212AIT0549.1727

Strain: MN- STRAWBERRY LEMONADE

Batch#: ; Batch Size: g

Sample Received: 01/05/2023; Report Created: 01/11/2023

rcre22cr

Ingestible, Soft Chew, Other

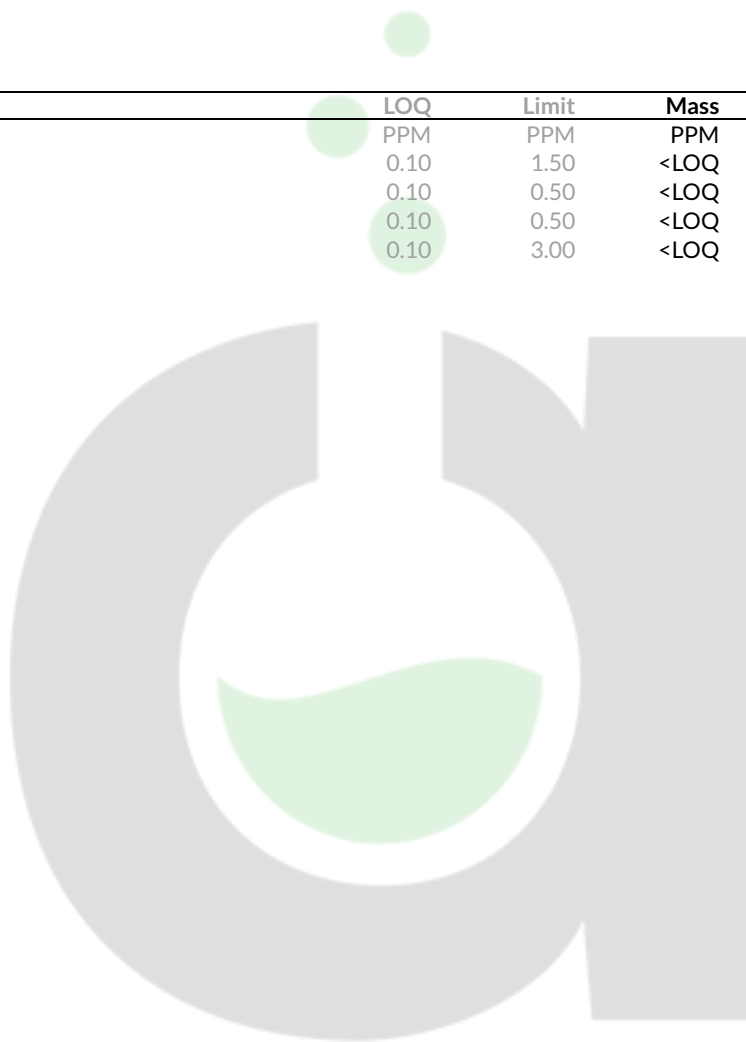


Heavy Metals

Pass

Date Tested: 01/06/2023

Analyte	LOQ	Limit	Mass	Status
	PPM	PPM	PPM	
Arsenic	0.10	1.50	<LOQ	Pass
Cadmium	0.10	0.50	<LOQ	Pass
Lead	0.10	0.50	<LOQ	Pass
Mercury	0.10	3.00	<LOQ	Pass



Method: ICPMS

4150 98th Ave S
Fargo, ND
(888) 897-4367
www.hempinspection.com



Ben Gaboury

Senior Analytical Chemist

Confident Cannabis
All Rights Reserved
(866) 506-5866

This product has been tested by Adams Independent Testing using valid testing methodologies. Values reported apply only to the product tested and only as the sample was received. Adams Independent Testing makes no claims as to the efficacy, safety, or other risks associated with any detected or nondetected level of any compounds reported herein. This Certificate shall not be reproduced except in full, without the written approval of Adams Independent Testing. Test results that are Pass/Fail are reported using the Oregon Health Authority, Public Health Division - Chapter 333-007-0320, effective 1/1/2021. Results above the Limit will be considered Fail and will be in red. This is for informational purposes only and can be changed upon request. Measurement Uncertainty is not used for pass/fail conditions but available upon request.

Minnabis

4225 38th St SW
Fargo, ND 58104
cody@northlandvapor.com
(763) 229-2634

Sample: 2212AIT0549.1727

Strain: MN- STRAWBERRY LEMONADE

Batch#: ; Batch Size: g

Sample Received: 01/05/2023; Report Created: 01/11/2023

rcre22cr

Ingestible, Soft Chew, Other



Pesticides

Pass

Date Tested: 01/10/2023

Analyte	LOQ	Limit	Mass	Status
	PPM	PPM	PPM	
Abamectin	0.01	0.50	<LOQ	Pass
Acephate	0.01	0.40	<LOQ	Pass
Acequinocyl	0.01	2.00	<LOQ	Pass
Acetamiprid	0.01	0.20	<LOQ	Pass
Aldicarb	0.01	0.40	<LOQ	Pass
Azoxystrobin	0.01	0.20	<LOQ	Pass
Bifenazate	0.01	0.20	<LOQ	Pass
Bifenthrin	0.01	0.20	<LOQ	Pass
Boscalid	0.01	0.40	<LOQ	Pass
Carbaryl	0.01	0.20	<LOQ	Pass
Carbofuran	0.01	0.20	<LOQ	Pass
Chlorantraniliprole	0.01	0.20	<LOQ	Pass
Chlorfenapyr	0.01	1.00	<LOQ	Pass
Chlorpyrifos	0.01	0.20	<LOQ	Pass
Clofentezine	0.01	0.20	<LOQ	Pass
Cyfluthrin	0.01	1.00	<LOQ	Pass
Cypermethrin	0.01	1.00	<LOQ	Pass
Daminozide	0.01	1.00	<LOQ	Pass
DDVP	0.01	1.00	<LOQ	Pass
Diazinon	0.01	0.20	<LOQ	Pass
Dimethoate	0.01	0.20	<LOQ	Pass
Ethoprophos	0.01	0.20	<LOQ	Pass
Etofenprox	0.01	0.40	<LOQ	Pass
Etoxazole	0.01	0.20	<LOQ	Pass
Fenoxycarb	0.01	0.20	<LOQ	Pass

Methods: LCMS and GCMS

4150 98th Ave S
Fargo, ND
(888) 897-4367
www.hempinspection.com




Ben Gaboury

Senior Analytical Chemist



Confident Cannabis
All Rights Reserved
(866) 506-5866

This product has been tested by Adams Independent Testing using valid testing methodologies. Values reported apply only to the product tested and only as the sample was received. Adams Independent Testing makes no claims as to the efficacy, safety, or other risks associated with any detected or nondetected level of any compounds reported herein. This Certificate shall not be reproduced except in full, without the written approval of Adams Independent Testing. Test results that are Pass/Fail are reported using the Oregon Health Authority, Public Health Division - Chapter 333-007-0320, effective 1/1/2021. Results above the Limit will be considered Fail and will be in red. This is for informational purposes only and can be changed upon request. Measurement Uncertainty is not used for pass/fail conditions but available upon request.

Minnabis

4225 38th St SW
Fargo, ND 58104
cody@northlandvapor.com
(763) 229-2634

Sample: 2212AIT0549.1727

Strain: MN- STRAWBERRY LEMONADE

Batch#: ; Batch Size: g

Sample Received: 01/05/2023; Report Created: 01/11/2023

rcre22cr

Ingestible, Soft Chew, Other



Pesticides

Pass

Date Tested: 01/10/2023

Analyte	LOQ	Limit	Mass	Status
	PPM	PPM	PPM	
Fenpyroximate	0.01	0.40	<LOQ	Pass
Fipronil	0.01	0.40	<LOQ	Pass
Fonicamid	0.01	1.00	<LOQ	Pass
Fludioxonil	0.01	0.40	<LOQ	Pass
Hexythiazox	0.01	1.00	<LOQ	Pass
Imazalil	0.01	0.20	<LOQ	Pass
Imidacloprid	0.01	0.40	<LOQ	Pass
Kresoxim Methyl	0.01	0.40	<LOQ	Pass
Malathion	0.01	0.20	<LOQ	Pass
Metalaxyl	0.01	0.20	<LOQ	Pass
Methiocarb	0.01	0.20	<LOQ	Pass
Methomyl	0.01	0.40	<LOQ	Pass
Methyl Parathion	0.01	0.20	<LOQ	Pass
MGK-264	0.01	0.20	<LOQ	Pass
Myclobutanil	0.01	0.20	<LOQ	Pass
Naled	0.01	0.50	<LOQ	Pass
Oxamyl	0.01	1.00	<LOQ	Pass
Paclobutrazol	0.01	0.40	<LOQ	Pass
Permethrins	0.01	0.20	<LOQ	Pass
Phosmet	0.01	0.20	<LOQ	Pass
Piperonyl Butoxide	0.01	2.00	<LOQ	Pass
Prallethrin	0.01	0.20	<LOQ	Pass
Propiconazole	0.01	0.40	<LOQ	Pass
Propoxur	0.01	0.20	<LOQ	Pass
Pyrethrins	0.01	1.00	<LOQ	Pass

Methods: LCMS and GCMS

4150 98th Ave S
Fargo, ND
(888) 897-4367
www.hempinspection.com




Ben Gaboury

Senior Analytical Chemist



Confident Cannabis
All Rights Reserved
(866) 506-5866

This product has been tested by Adams Independent Testing using valid testing methodologies. Values reported apply only to the product tested and only as the sample was received. Adams Independent Testing makes no claims as to the efficacy, safety, or other risks associated with any detected or nondetected level of any compounds reported herein. This Certificate shall not be reproduced except in full, without the written approval of Adams Independent Testing. Test results that are Pass/Fail are reported using the Oregon Health Authority, Public Health Division - Chapter 333-007-0320, effective 1/1/2021. Results above the Limit will be considered Fail and will be in red. This is for informational purposes only and can be changed upon request. Measurement Uncertainty is not used for pass/fail conditions but available upon request.

Minnabis

4225 38th St SW
Fargo, ND 58104
cody@northlandvapor.com
(763) 229-2634

Sample: 2212AIT0549.1727

Strain: MN- STRAWBERRY LEMONADE

Batch#: ; Batch Size: g

Sample Received: 01/05/2023; Report Created: 01/11/2023

rcre22cr

Ingestible, Soft Chew, Other



Pesticides

Pass

Date Tested: 01/10/2023

Analyte	LOQ	Limit	Mass	Status
	PPM	PPM	PPM	
Pyridaben	0.01	0.20	<LOQ	Pass
Spinosad	0.01	0.20	<LOQ	Pass
Spiromesifen	0.01	0.20	<LOQ	Pass
Spirotetramat	0.01	0.20	<LOQ	Pass
Spiroxamine	0.01	0.40	<LOQ	Pass
Tebuconazole	0.01	0.40	<LOQ	Pass
Thiacloprid	0.01	0.20	<LOQ	Pass
Thiamethoxam	0.01	0.20	<LOQ	Pass
Trifloxystrobin	0.01	0.20	<LOQ	Pass

Methods: LCMS and GCMS

4150 98th Ave S
Fargo, ND
(888) 897-4367
www.hempinspection.com



Ben Gaboury

Senior Analytical Chemist



Confident Cannabis
All Rights Reserved
(866) 506-5866

This product has been tested by Adams Independent Testing using valid testing methodologies. Values reported apply only to the product tested and only as the sample was received. Adams Independent Testing makes no claims as to the efficacy, safety, or other risks associated with any detected or nondetected level of any compounds reported herein. This Certificate shall not be reproduced except in full, without the written approval of Adams Independent Testing. Test results that are Pass/Fail are reported using the Oregon Health Authority, Public Health Division - Chapter 333-007-0320, effective 1/1/2021. Results above the Limit will be considered Fail and will be in red. This is for informational purposes only and can be changed upon request. Measurement Uncertainty is not used for pass/fail conditions but available upon request.